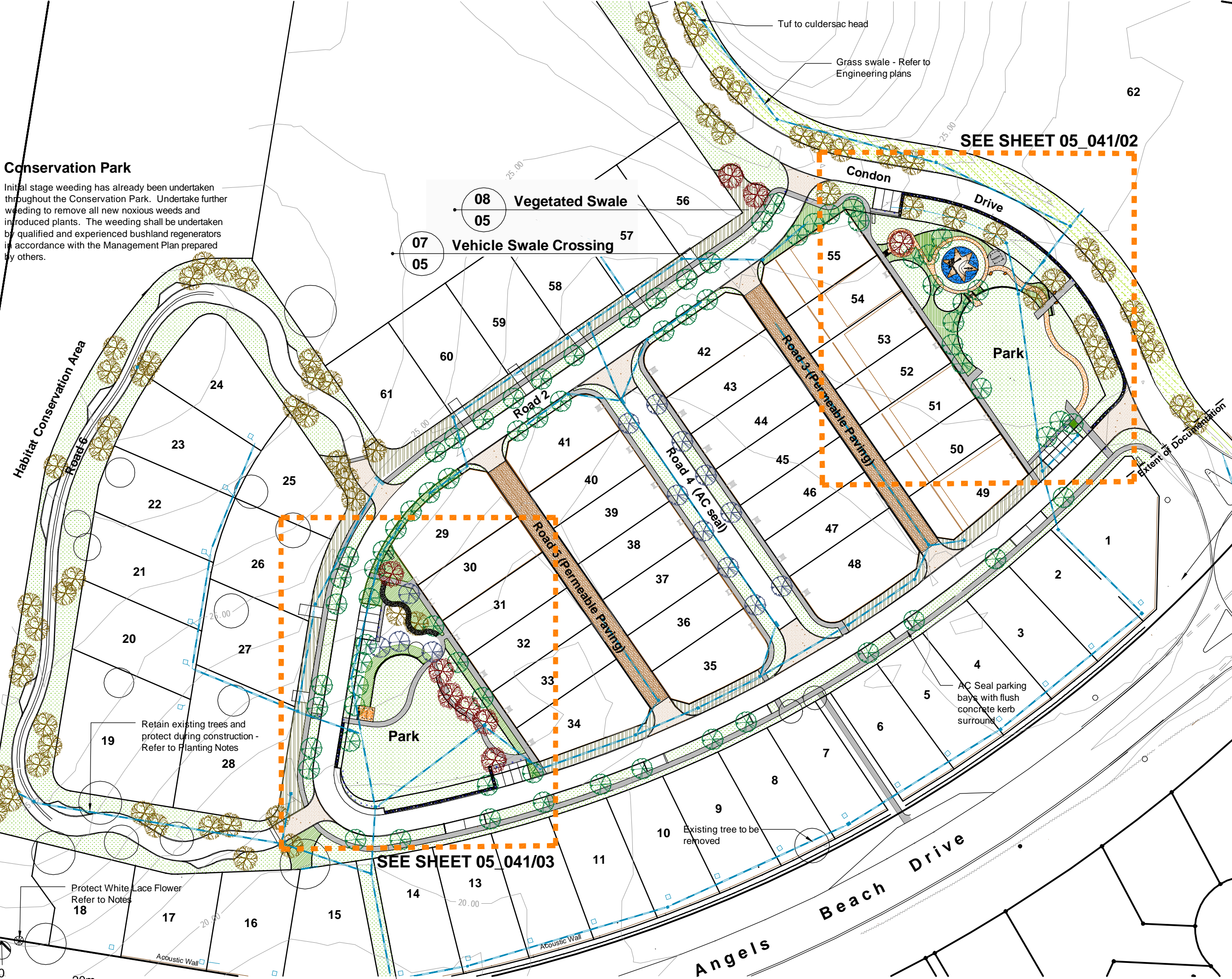


Conservation Park

Initial stage weeding has already been undertaken throughout the Conservation Park. Undertake further weeding to remove all new noxious weeds and introduced plants. The weeding shall be undertaken by qualified and experienced bushland regenerators in accordance with the Management Plan prepared by others.



- Legend**
- Cupaniopsis anacardioides - Tuckeroo
 - Callitris columellaris - Sand cypress
 - Flindersia schottiana - Cudgerie
 - Backhousia myrtifolia - Grey myrtle
 - Existing tree to be retained - 10m buffer applies
 - Garden area
 - Turf
 - Vegetated swale - Refer to detail
 - Exposed aggregate concrete
 - Permeable paving
 - Concrete pathway type 1
 - Concrete pathway type 2
 - Gravel pathway
 - CE Concrete garden edgde
 - Bollard

- Notes:**
1. Refer to Engineering plans for structural details and services locations
 2. Refer to Planting Notes on Sheet 05-041/05 and Materials and Finishes on cover sheet.

For Entry and Acoustic Treatments refer to drawings by Jackie Amos Landscape Architect

CONSTRUCTION CERTIFICATE

This document was prepared for the exclusive use of North Angels Beach Development (Ballina) Pty Ltd for the purpose of construction of landscape works. This document and the information contained within shall not be used for any other purpose or by any other person, company or corporation. Topographic, cadastral, dimensional and other information on drawings contained in this document are not to be relied upon for any purpose other than that stated above. Drawings and designs contained within this document are subject to engineering design and final survey.

design team ink Landscape Architecture & Urban Design	Designed : SDR
PO Box 1473 Ballina NSW 2478	Date : 11.08.08
T F 02 6628 8494	XREF's : Nil
M 0428 259 286	
sheryn@designteamink.com	

Project Title
Angels Beach North Ballina

Client
North Angels Beach Development (Ballina) Pty Ltd

Drawing Title
Site Surface Finishes Plan

Drawing Number
05_041/01

Revision
-

design team ink